



MOSAIC

Data Management & Business Intelligence platform



MOSAIC is a HiTech Platform for:

- Data visualization & analysis
- Dashboards
- Reports construction
- Master Data Management
- Data collection (ETL)
- Business glossary



Data - the new Oil



The massive use of data has become widespread not only for **reporting and decision support**, but also for **direct monetization of data** by:

- **selling data**, for example by telecom operators about the distribution of people flows to determine the optimal location of a new shop or office
- **building products and services based on data** such as recommendation services that boost sales
- **optimization business processes** like predictive machine maintenance.

In addition, data is the basis for training **artificial intelligence** models



Data becomes an asset



Data becomes a real asset that allows the Company to **improve the efficiency** of its business and **receive additional revenue** only when:

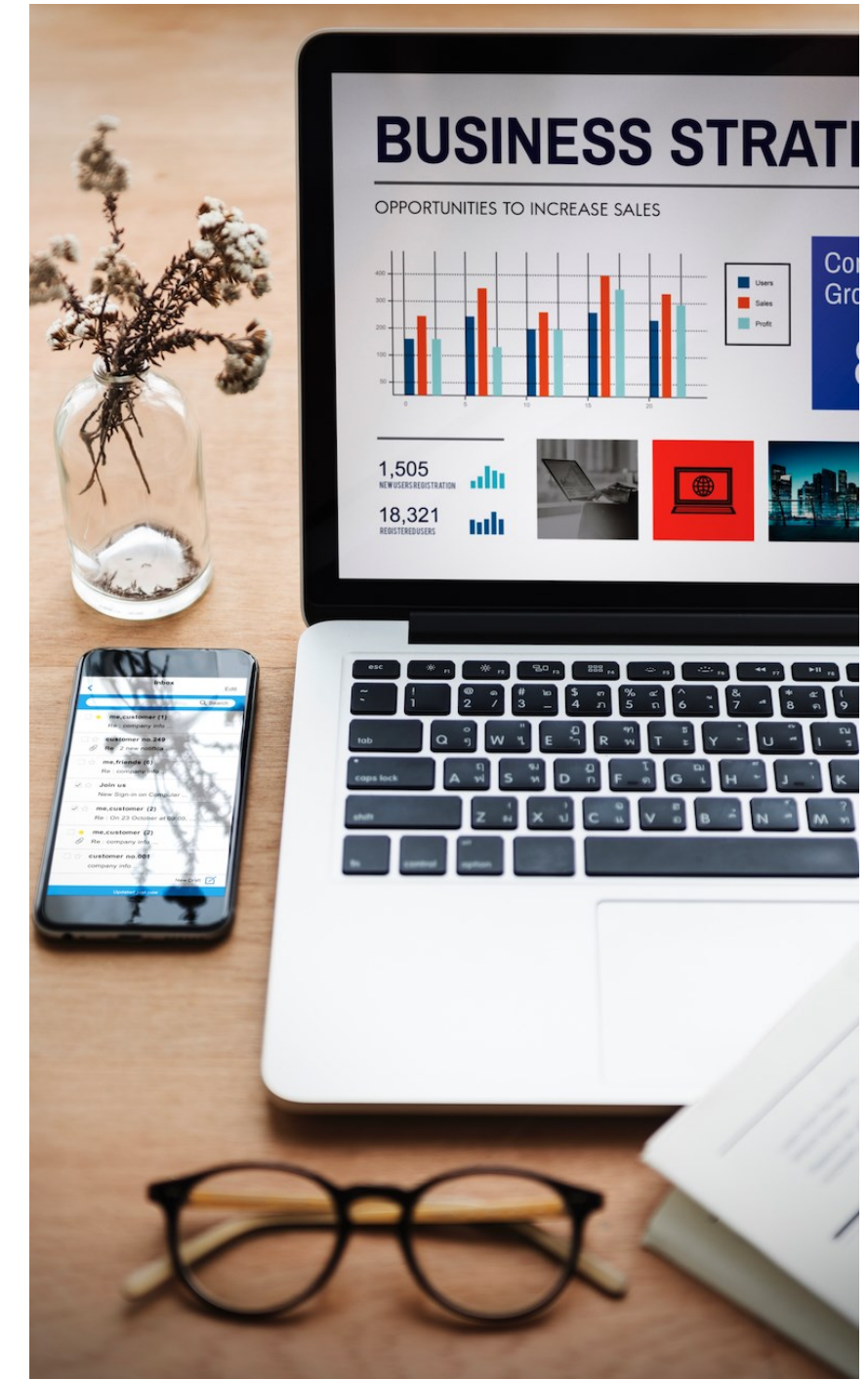
- data is reliable, complete and consistent
- data is provided fast and timely
- the cost of owning and working with data does not exceed the benefits of data
- data is available to all employees of the Company and IT systems
- all employees use proven algorithms for calculating standard indicators
- it is convenient to work with data
- the results of working with data can be easily published
- when working with data, you comply with legal requirements



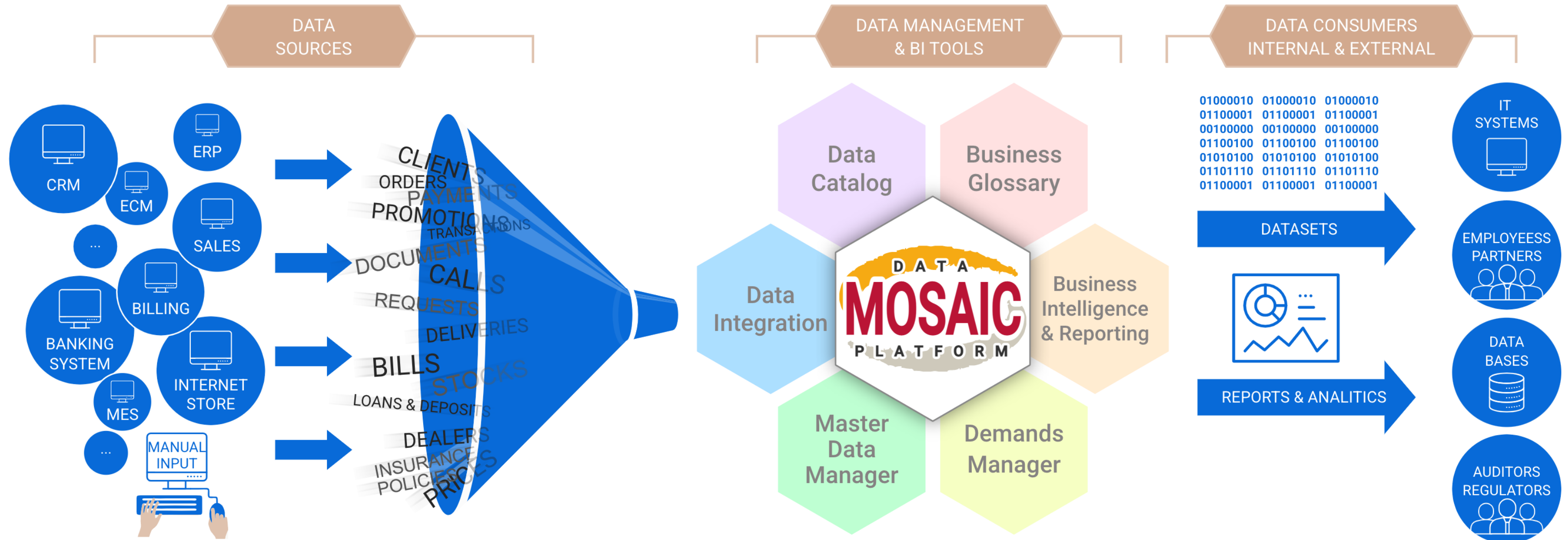
MOSAIC Data Management & Business Intelligence Platform is designed to:

- **Increase availability of data**
- **Improve understanding of data**
- **Reduce cost of data ownership**
- **Increase profit of data**

MOSAIC helps the clients benefit from data



How MOSAIC fits in your Company



MOSAIC platform creates a single **virtual space** of data in a company by collecting data from various sources using a queuing system, presenting them in a user-configurable structure in the form of reports, dashboards or datasets in self-service mode. MOSAIC calculates, checks and analyzes KPIs and provides data to consumers in an automated mode incl. into external databases and IT systems, increasing availability and reliability of data.



Simplicity with powerful functionality

- Simplicity for **users** - the concept of "*Chart by 1 click*"
- Simplicity for **analysts** – data links, drilldown hierarchies are created with a single click, visual data exploration scenarios are intuitive and do not require programming
- Ease and simplicity for **administrators** - deployment in minutes
- Simplicity for **consumers** - data animation and image-based annotation allows you to show information to audiences with different levels of experience

Low entry threshold for mass use

- Tremendous **decrease requirements for equipment** due to a unique approach with filling the virtual data space upon consumer requests based on the theory of queuing
- The system allows **less qualified personnel** to work more efficiently
- **Cost optimization** due to self-configuration by customer personnel
- There are **no special requirements** for the user's workstation





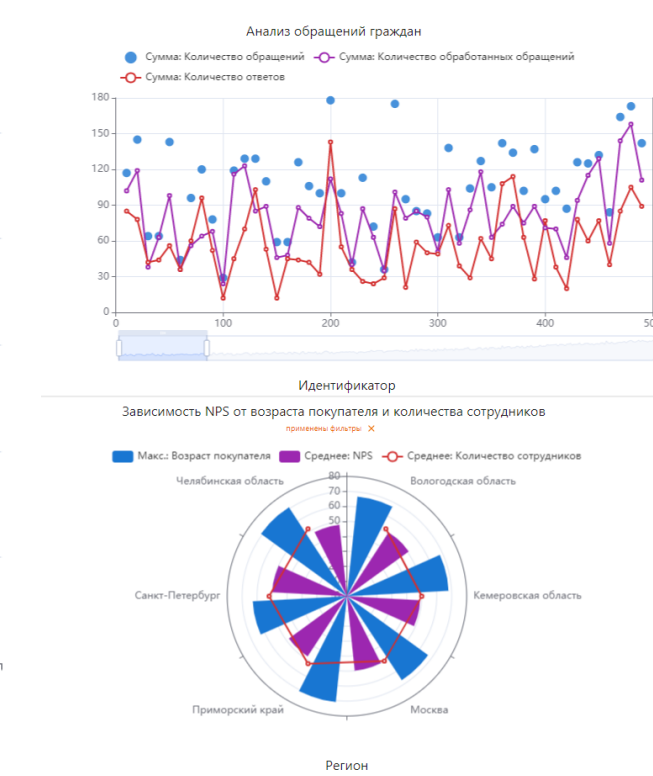
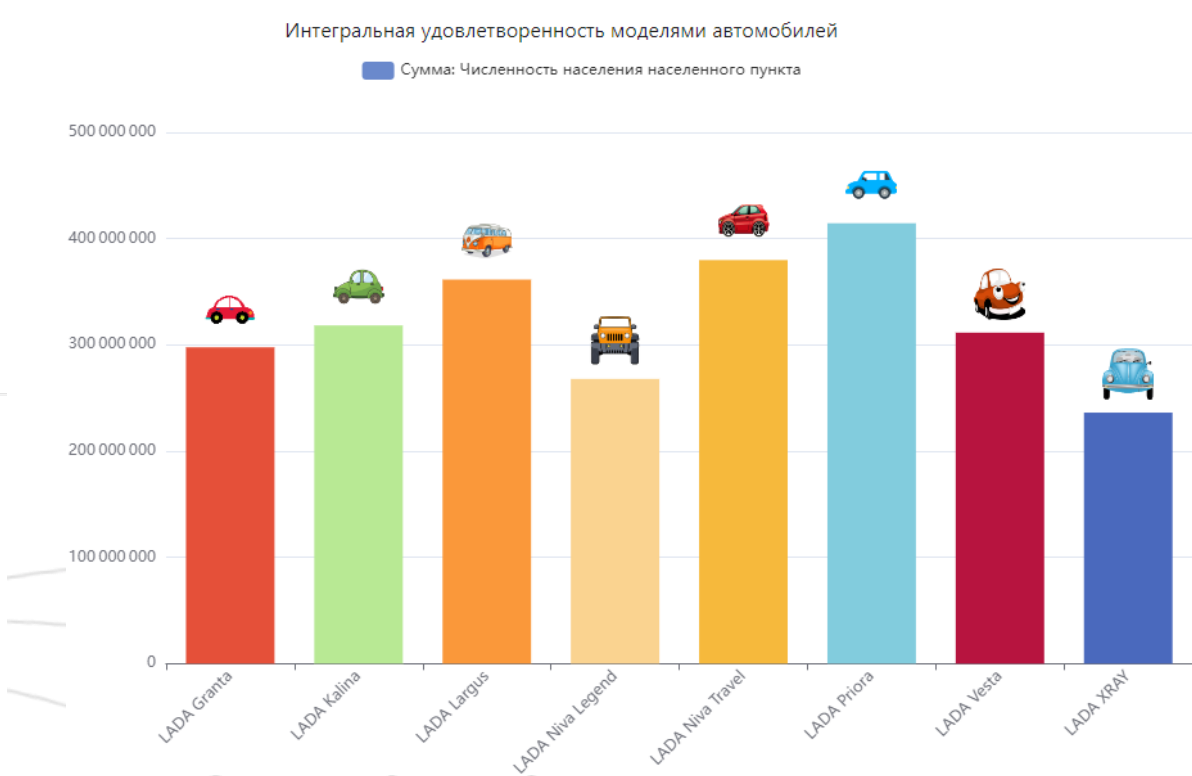
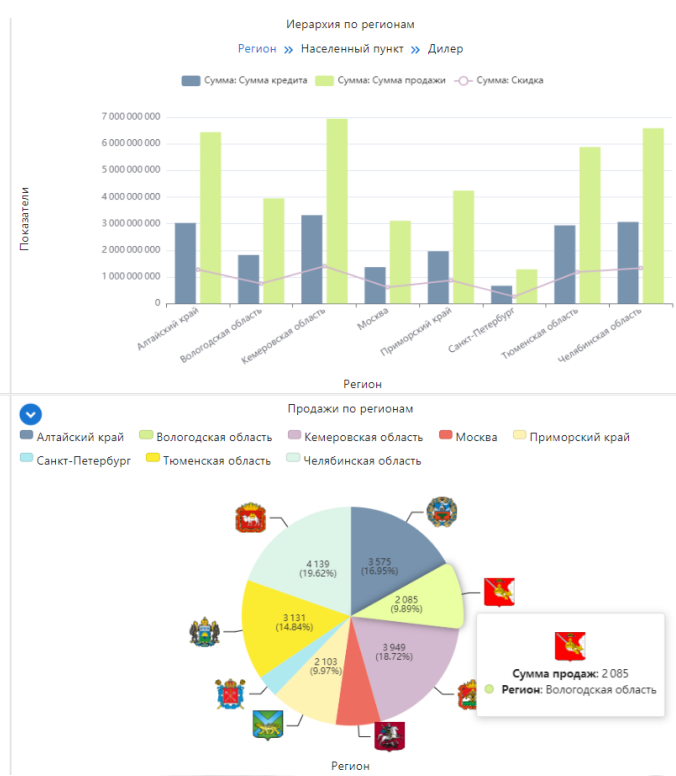
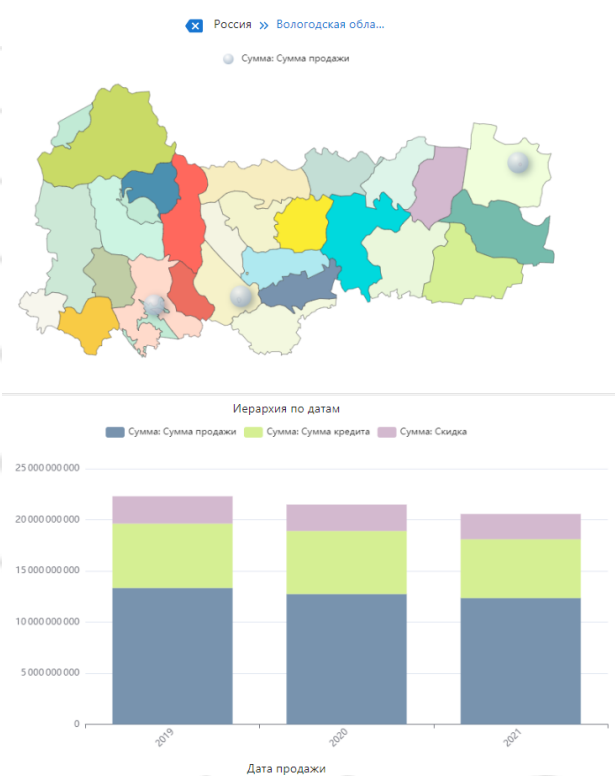
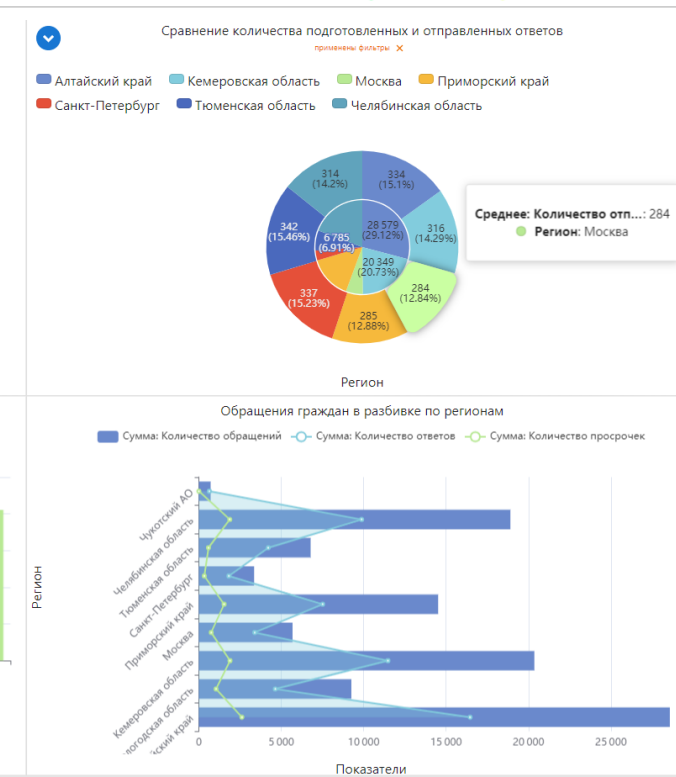
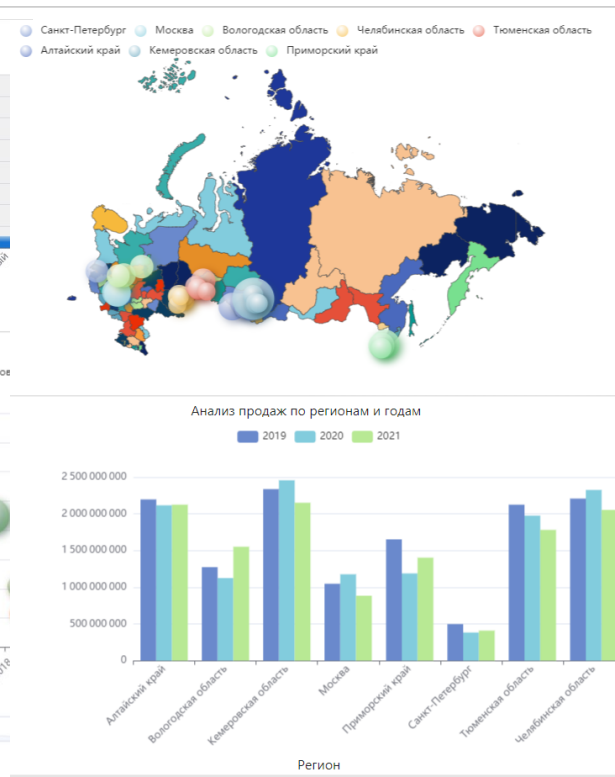
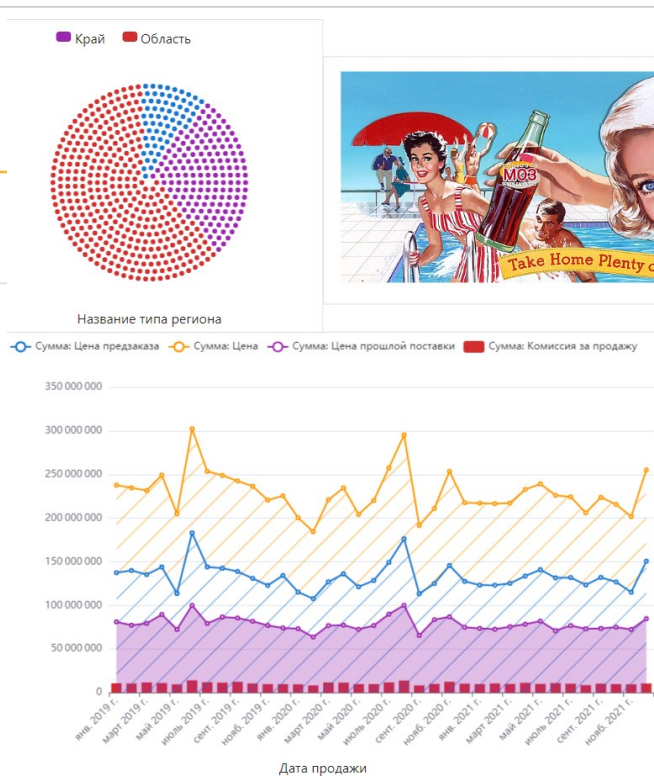
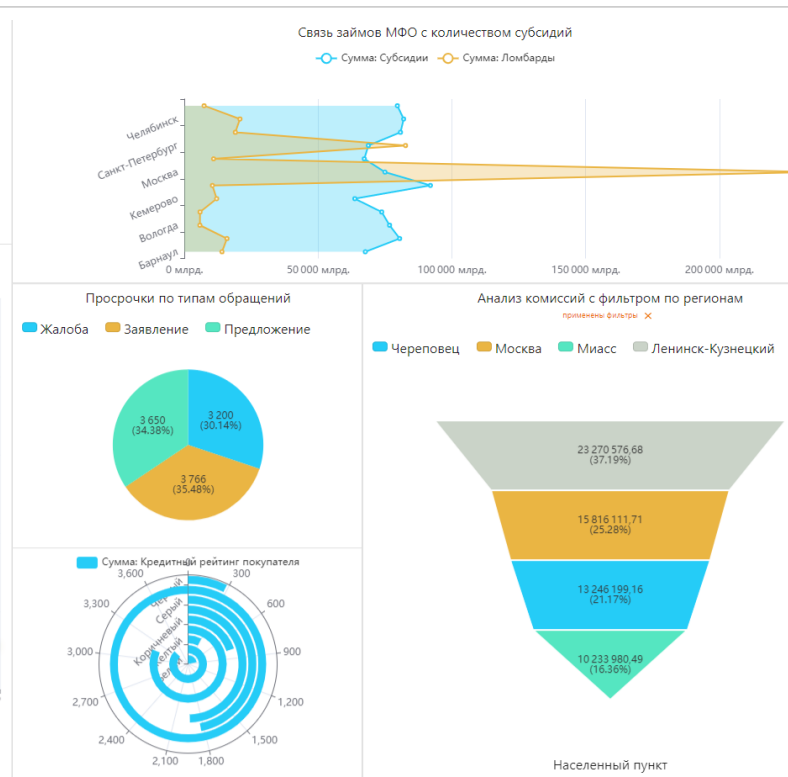
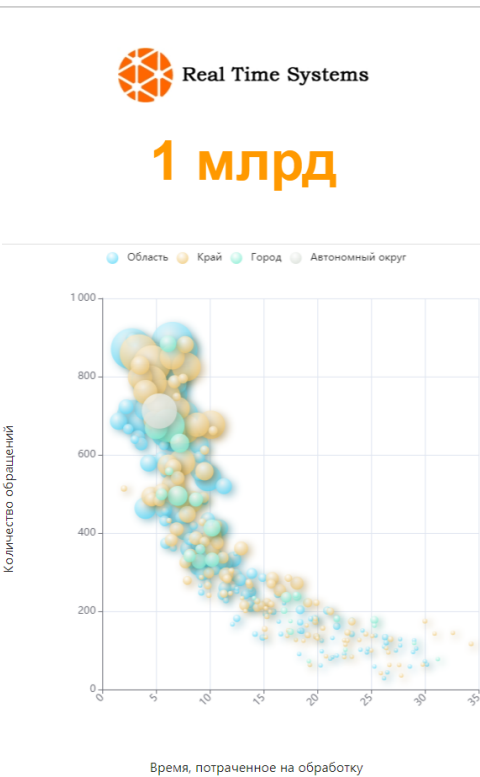
MOSAIC Platform areas of use:

- Business Intelligence, Reporting, visual data analysis
- Data Management (MDM, Data Catalog, Business Glossary)
- ETL Data Loading
- Support for decision making, data products and data-driven business processes

or if IT systems can't support and can't be quickly modified for:

- launching a new product, service or line of business
- information security response to new challenges of cyber fraudsters
- non-standard bonuses for employees, for example, during a Covid-19 lockdown
- new requirements of the regulator
- response to competitors' actions

you can use MOSAIC and integrate its services into IT systems via REST API

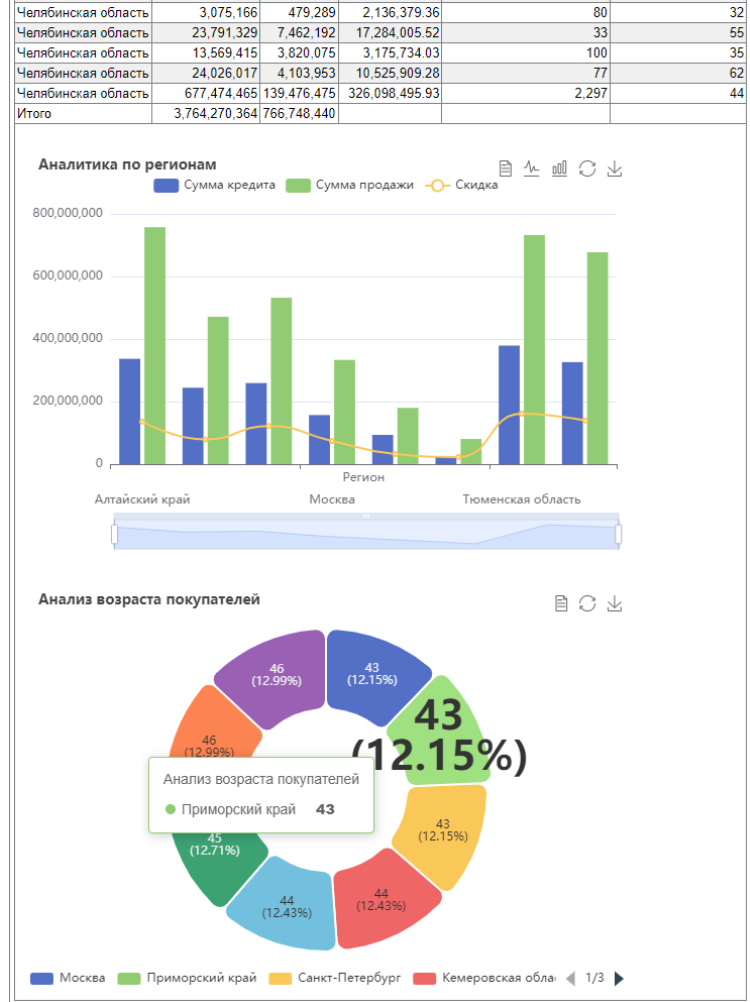


MOSAIC Reports Examples

List report

Код региона	Регион	Информация по региону	Населенный пункт	Дилер	Сумма продаж	Товар
22	Алтайский край	район	Каменка-Оби	Алтай-Лада (филмал СТО «Каменка-Оби)	3,290,724	LADA Kalina
74	Челябинская область	район	Челябинск	Асия Ато	11,159,980	LADA Largus
42	Кемеровская область	район	Новокузнецк	Асия Ато	15,754,338	LADA Vesta
72	Тюменская область	район	Тобольск	Тобольск-Лада	4,282,452	LADA XRAY
42	Кемеровская область	район	Ленинск-Кузнецкий	Асия Ато	8,813,452	LADA Kalina
77	Москва	район	Зеленоград	Лада Зеленоград	14,243,081	LADA Priora
74	Челябинская область	район	Киселовский	Лада Зеленоград	9,685,273	LADA XRAY
42	Кемеровская область	район	Каменск	Автоцентр Дик и К	7,080,372	LADA Niva Legend
74	Челябинская область	район	Магнитогорск	Иномарки-Магнитогорск	4,708,058	LADA Vesta
72	Тюменская область	район	Тюмень	Асия Ато	2,974,312	LADA Vesta
74	Челябинская область	район	Миасс	Асия Ато	15,136,948	LADA XRAY
72	Тюменская область	район	Ялуторовск	Ялуторовск-Лада	22,732,258	LADA Niva Legend
25	Приморский край	район	Уссурийск	Спутник	24,587,921	LADA Kalina
35	Вологодская область	район	Великий Устюг	ЛАДА центр Череповец	5,033,111	LADA Niva Legend
25	Приморский край	район	Спутник	Спутник	17,064,892	LADA Largus
78	Санкт-Петербург	район	Санкт-Петербург	Автоцентр Ител Лад	1,970,318	LADA XRAY
42	Кемеровская область	район	Каменск	Автоцентр Дик и К	17,286,474	LADA Niva Travel
22	Алтайский край	район	Каменка-Оби	Алтай-Лада (филмал СТО «Каменка-Оби)	5,749,332	LADA Niva Legend
72	Тюменская область	район	Ишим	АЗИЯ АВТО УСТЬ-КАМЕНОГОРСКО	13,431,542	LADA Priora
42	Кемеровская область	район	Ленинск-Кузнецкий	Даль-Лада	1,053,436	LADA Priora
74	Челябинская область	район	Сатка	Владимир	7,615,514	LADA Kalina
42	Кемеровская область	район	Новокузнецк	Асия Ато	7,086,835	LADA Granta
22	Алтайский край	район	Барнаул	Автоцентр ЮГ	22,355,287	LADA Priora
42	Кемеровская область	район	Ленинск-Кузнецкий	Асия Ато	22,437,018	LADA XRAY
42	Кемеровская область	район	Новокузнецк	Асия Ато	5,574,274	LADA Niva Travel
72	Тюменская область	район	Тюмень	Асия Ато	21,601,103	LADA Niva Legend
22	Алтайский край	район	Бийск	Бийск-Ато-Центр	19,010,918	LADA XRAY
25	Приморский край	район	Владивосток	Даль-Лада	6,585,117	LADA Niva Travel
22	Алтайский край	район	Алейск	Алтай-Лада (филмал СТО «Алейск)	8,440,295	LADA Granta
74	Челябинская область	район	Миасс	АвтоРеал	12,036,093	LADA Granta
77	Москва	район	Зеленоград	Лада Зеленоград	17,507,838	LADA Vesta
42	Кемеровская область	район	Ленинск-Кузнецкий	Асия Ато	15,820,623	LADA Kalina
35	Вологодская область	район	Череповец	ЛАДА центр Череповец	3,740,455	LADA Largus
22	Алтайский край	район	Бийск	Бийск-Ато-Центр	2,435,997	LADA Granta
72	Тюменская область	район	Тюмень	Асия Ато	7,440,028	LADA Vesta
25	Приморский край	район	Владивосток	Даль-Лада	14,973,004	LADA XRAY
74	Челябинская область	район	Сатка	Владимир	23,176,325	LADA XRAY
22	Алтайский край	район	Каменка-Оби	Алтай-Лада (филмал СТО «Каменка-Оби)	3,342,919	LADA Priora
42	Кемеровская область	район	Каменск	Автоцентр Дик и К	8,151,279	LADA Niva Travel
42	Кемеровская область	район	Каменск	Автоцентр Дик и К	18,742,367	LADA Niva Travel
77	Москва	район	Зеленоград	Лада Зеленоград	15,128,699	LADA XRAY
35	Вологодская область	район	Великий Устюг	ЛАДА центр Череповец	21,601,979	LADA Niva Travel
74	Челябинская область	район	Магнитогорск	Иномарки-Магнитогорск	8,355,230	LADA Largus
42	Кемеровская область	район	Прогрессовск	Автосол	21,547,820	LADA Niva Legend
74	Челябинская область	район	Златоуст	Владимир	11,582,508	LADA Priora
74	Челябинская область	район	Челябинск	Асия Ато	15,823,589	LADA Niva Legend
42	Кемеровская область	район	Михайловск	Асия Ато	4,088,947	LADA Niva Travel
35	Вологодская область	район	Вологда	Автосол-Марлен	22,883,044	LADA Niva Legend
74	Челябинская область	район	Магнитогорск	Иномарки-Магнитогорск	17,475,321	LADA Priora
74	Челябинская область	район	Челябинск	Асия Ато	23,836,547	LADA Niva Legend
42	Кемеровская область	район	Ленинск-Кузнецкий	Даль-Лада	12,013,774	LADA Kalina
22	Алтайский край	район	Бийск	Бийск-Ато-Центр	9,117,710	LADA Granta
35	Вологодская область	район	Великий Устюг	ЛАДА центр Череповец	10,721,034	LADA Granta
22	Алтайский край	район	Барнаул	Автоцентр ЮГ	16,879,108	LADA XRAY
22	Алтайский край	район	Славгород	Алтай-Лада (филмал СТО г. Славгород)	21,082,355	LADA Niva Travel
72	Тюменская область	район	Тюмень	Асия Ато	8,940,354	LADA Largus
72	Тюменская область	район	Заводоуовск	Заводоуовск-Лада	21,886,882	LADA Niva Travel
42	Кемеровская область	район	Каменск	Автоцентр Дик и К	12,181,134	LADA Vesta
74	Челябинская область	район	Челябинск	Асия Ато	16,830,414	LADA Kalina
77	Москва	район	ЛАДА Кузнецов	ЛАДА Кузнецов	12,934,948	LADA Largus
35	Вологодская область	район	Череповец	ЛАДА центр Череповец	16,928,843	LADA XRAY
72	Тюменская область	район	Ялуторовск	Ялуторовск-Лада	23,825,705	LADA Niva Travel
35	Вологодская область	район	Великий Устюг	ЛАДА центр Череповец	12,194,560	LADA Niva Legend
24	Псковская область	район	Псков	Псков	14,071,687	LADA Niva Legend

Interactive charts



Pixel Perfect

1

2

3

4

5

6

7

8

9

10

11

12

13

14

15

16

17

18

19

20

21

22

23

24

25

26

27

28

29

30

31

32

33

34

35

36

37

38

39

40

41

42

43

44

45

46

47

48

49

50

51

52

53

54

55

56

57

58

59

60

61

62

63

64

65

66

67

68

69

70

71

72

73

74

75

76

77

78

79

80

81

82

83

84

85

86

87

88

89

90

91

92

93

94

95

96

97

98

99

100

101

102

103

104

105

106

107

108

109

110

111

112

113

114

115

116

117

118

119

120

121

122

123

124

125

126

127

128

129

130

131

132

133

134

135

136

137

138

139

140

141

142

143

144

145

146

147

148

149

150

151

152

153

154

155

156

157

158

159

160

161

162

163

164

165

166

167

168

169

170

171

172

173

174

175

176

177

178

179

180

181

182

183

184

185

186

187

188

189

190

191

192

193

194

195

196

197

198

199

200

201

202

203

204

205

206

207

208

209

210

211

212

213

214

215

216

217

218

219

220

221

222

223

224

225

226

227

228

229

230

231

232

233

234

235

236

237

238

239

240

241

242

243

244

245

246

247

248

249

250

251

252

253

254

255

256

257

258

259

260

261

262

263

264

265

266

267

268

269

270

271

272

273

274

275

276

277

278

279

280

281

282

283

284

285

286

287

288

289

290

291

292

293

294

295

296

297

298

299

300

301

302

303

304

305

306

307

308

309

310

311

312

313

314

315

316

317

318

319

320

321

322

323

324

325

326

327

328

329

330

331

332

333

334

335

336

337

338

339

340

341

342

343

344

345

346

347

348

349

350

351

352

353

354

355

356

357

358

359

360

361

362

363

364

365

366

367

368

369

370

371

372

373

374

375

376

377

378

379

380

381

382

383

384

385

386

387

388

389

390

391

392

393

394

395

396

397

398

399

400

401

402

403

404

405

406

407

408

409

410

411

412

413

414

415

416

417

418

419

420

421

422

423

424

425

426

427

428

429

430

431

432

433

434

435

436

437

438

439

440

441

442

443

444

445

446

447

448

449

450

451

452

453

454

455

456

457

458

459

460

461

462

463

464

465

466

467

468

469

470

471

472

473

474

475

476

477

478

479

480

481

482

483

484

485

486

487

488

489

490

491

492

493

494

495

496

497

498

499

500

501

502

503

504

505

506

507

508

509

510

511

512

513

514

515

516

517

518

519

520

521

522

523

524

525

526

527

528

529

530

531

532

533

534

535

536

537

538

539

540

541

542

543

544

545

546

547

548

549

550

551

552

553

554

555

556

557

558

559

560

561

562

563

564

565

566

567

568

569

570

571

572

573

574

575

576

577

578

579

580

581

582

583

584

585

586

587

588

589

590

591

592

593

594

595

596

597

598

599

600

601

602

603

604

605

606

607

608

609

610

611

612

613

614

615

616

617

618

619

620

621

622

623

624

625

626

627

628

629

630

631

632

633

634

635

636

637

638

639

640

641

642

643

644

645

646

647

648

649

650

651

652

653

654

655

656

657

658

659

660

661

662

663

664

665

666

667

668

669

670

671

672

673

674

675

676

677

678

679

680

681

682

683

684

685

686

687

688

689

690

691

692

693

694

695

696

697

698

699

700

701

702

703

704

705

706

707

708

709

710

711

712

713

714

715

716

717

718

719

720

721

722

723

724

725

726

727

728

729

730

731

732

733

734

735

736

737

738

739

740

741

742

743

744

745

746

747

748

749

750

751

752

753

754

755

756

757

758

759

760

761

762

763

764

765

766

767

768

769

770

771

772

773

774

775

776

777

778

779

780

781

782

783

784

785

786

787

788

789

790

791

792

793

794

795

796

797

798

799

800

801

802

803

804

805

806

807

808

809

810

811

812

813

814

815

816

817

818

819

820

821

822

823

824

825

826

827

828

829

830

831

832

833

834

835

836

837

838

839

840

841

842

843

844

845

846

847

848

849

850

851

852

853

854

855

856

857

858

859

860

861

862

863

864

865

866

867

868

869

870

871

872

873

874

875

876

877

878

879

880

881

882

883

884

885

886

887

888

889

890

891

892

893

894

895

896

897

898

899

900

901

902

903

904

905

906

907

908

909

910

911

912

913

914

915

916

917

918

919

920

921

922

923

924

925

926

927

928

929

930

931

932

933

934

935

936

937

938

939

940

941

942

943

944

945

946

947

948

949

950

951

952

953

954

955

956

957

958

959

960

961

962

963

964

965

966

967

968

969

970

971

972

973

974

975

976

977

978

979

980

981

982

983

984

985

986

987

988

989

990

991

992

993

994

995

996

997

998

999

1000

1

2

3

4

5

6

7

8

9

10

11

12

13

14

15

16

17

18

19

20

21

22

23

24

25

26

27

28

29

30

31

32

33

34

35

36

37

38

39

40

41

42

43

44

45

46

47

48

49

50

51

52

53

54

55

56

57

58

59

60

61

62

63

64

65

66

67

68

69

70

71

72

73

74

75

76

77

78

79

80

81

82

83

84

85

86

87

88

89

90

91

92

93

94

95

96

97

98

99

100

101

102

103

104

105

106

107

108

109

110

111

112

113

114

115

116

117

118

119

120

121

122

123

124

125

126

127

128

129

130

131

132

133

134

135

136

137

138

139

140

141

142

143

144

145

146

147

148

149

150

151

152

153

154

155

156

157

158

159

160

161

162

163

164

165

166

167

168

169

170

171

172

173

174

175

176

177

178

179

180

181

182

183

184

185

186

187

188

189

190

191

192

193

194

195

196

197

198

199

200

201

202

203

204

205

206

207

208

209

210

211

212

213

214

215

216

217

218

219

220

221

222

223

224

225

226

227

228

229

230

231

232

233

234

235

236

237

238

239

240

241

242

243

244

245

246

247

248

249

250

251

252

253

254

255

256

257

258

259

260

261

262

263

264

265

266

267

268

269

270

271

272

273

274

275

276

277

278

279

280

281

282

283

284

285

286

287

288

289

290

291

292

293

294

295

296

297

298

299

300

301

302

303

304

305

306

307

308

309

310

311

312

313

314

315

316

317

318

319

320

321

322

323

324

325

326

327

328

329

330

331

332

333

334

335

336

337

338

339

340

341

342

343

344

345

346

347

348

349

350

351

352

353

354

355

356

357

358

359

360

361

362

363

364

365

366

367

368

369

370

371

372

373

374

375

376

377

378

379

380

381

382

383

384

385

386

387

388

389

390

391

392

393

394

395

396

397

398

399

400

401

402

403

404

405

406

407

408

409

410

411

412

413

414

415

416

417

418

419

420

421

422

423

424

425

426

427

428

429

430

431

432

433

434

435

436

437

438

439

440

441

442

443

444

445

446

447

448

449

450

451

452

453

454

455

456

457

458

459

460

461

462

463

464

465

466

467

468

469

470

471

472

473

474

475

476

477

478

479

480

481

482

483

484

485

486

487

488

489

490

491

492

493

494

495

496

497

498

499

500

501

502

503

504

505

506

507

508

509

510

511

512

513

514

515

516

517

518

519

520

521

522

523

524

525

526

527

528

529

530

531

532

533

534

535

536

537

538

539

540

541

542

543

544

545

546

547

548

549

550

551

552

553

554

555

556

557

558

559

560

561

562

563

564

565

566

567

568

569

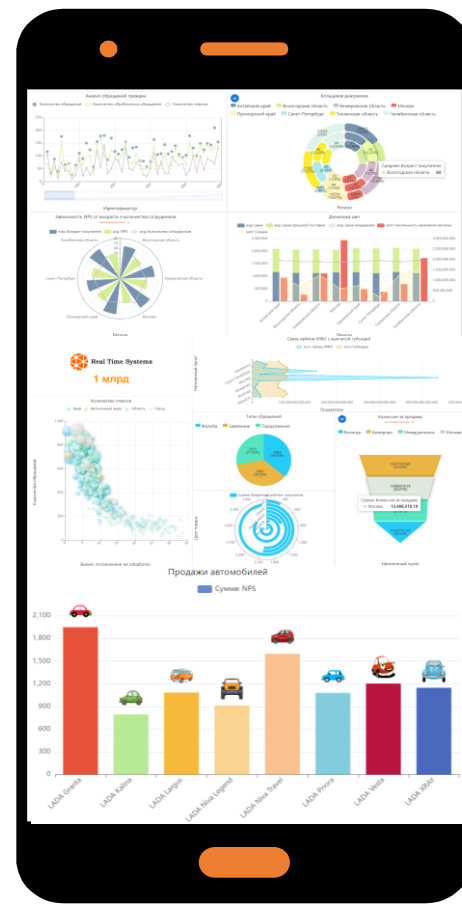
570

571

572

573

574





Company	Country	Industry
Beeline	Russia	Telecommunications
Rosneft	Russia	Oil and gas
Kar-Tel	Kazakhstan	Telecommunications
Unitel	Uzbekistan	Telecommunications
ArmenTel	Armenia	Telecommunications
Mobitel	Georgia	Telecommunications
Takom	Tajikistan	Telecommunications

The total confirmed economic effect from the operation of services on the MOSAIC platform in Beeline is **1 billion** RUR (13 mil USD) per month.

Proof:

https://events.cnews.ru/articles/2017-12-18_kak_izbezhat_oshibok_pri_vnedrenii_bi

MOSAIC platform also fits for:

- Banking
- Insurance
- Medicine
- Retail
- Oil and gas industry
- Manufacturing
- Transport and logistic
- Social security

Benefits of using MOSAIC



MOSAIC platform allows companies:

- **Significantly reduce hardware costs** for work with data
- **Reduce the cost of software** supporting enterprise operations by implementing some of the required functions in MOSAIC
- Significantly **save time** when employees work with data and reports
- **Optimize business processes** and **increase speed** of staff performing standard operations
- Generate **additional revenue** by launching new data-driven products
- **Reduce T2M** time to market for data driven products and services
- **Increase sales** by communicating information to customers in a visualized form that is more understandable to a wide audience
- **Pass audits** easier and **strengthen** your **position** when dealing with tax authorities and counterparties
- **Improve manageability** of the organization



MOSAIC is used by one of our clients to support the operation of a retail shops.

- **Motivation of sellers.** An analysis of 300'000 shop/days showed that sales efficiency falls if salesmen do not see their accumulated bonus every morning
- **Distribution of goods by shops.** When distributing goods according to the data of the previous day, the goods are distributed to the wrong stocks
- **Daily pricing process.** The daily generation of retail prices brings an additional percentage to revenue
- **Commercial removal of goods** from stores to warehouses for further redistribution
- **Cash collection control** in stores
- **Merchant fraud control** helps prevent unjustified bonus payments
- Creating lists for **defective goods compensation.** Late creation of claims leads to refusals of suppliers to pay money
- **Return of defective** non-repairable **goods** to suppliers.

Examples of using MOSAIC for cost reduction and additional revenue



In MOSAIC it is possible to quickly process and calculate data and give the result as an independent service or embed it into the interfaces of existing IT systems.

Here are just a few areas in which the use of MOSAIC allowed our clients to save resources / earn extra money:

- **Dealer motivation.** A specialized "off-the-shelf" solution does not allow supporting all creative ideas for paying extra bonuses to dealers that significantly increase sales
- **Fraud management.** Revenue assurance dept use data in their controls to prevent fraud
- **Account receivable collection.** Timely providing of data improves the quality and timing of collection receivables
- **Tariff plans updating.** Updating tariffs by analyzing information about charges
- **Monitoring and elimination of problems in services.** Helps prevent subscriber churn and profit loss.
- **Payments to partners optimization.** Based on the data, fees for content providers is reduced, fines are issued on contractors.
- **Reduction of fines and taxes.** Fines for late submission of data to enforcement authorities, challenging the amount of assessed taxes.
- **Customer support.** Online data providing increases customer loyalty and ARPU



MOSAIC helps to pass audits by:

- Storage of all executed data queries and reports with transparent archiving and search system
- Saving versions of reference data used for each data request
- Saving versions of data processing algorithms used for each data request
- Keeping a history of changes in data processing algorithms
- Generation of both aggregated and detailed reports and data sets of unlimited size (example: a 100 Gb report - all company payments for the year for auditors)
- A guarantee of the relevance of used algorithms
- Control of the freshness of the source data for each data request
- Automated procedure for transferring developments from test to production environment
- Built-in system for monitoring the correctness of indicators in reports





MOSAIC platform provides not only Business Intelligence, but also Data Management

In Business Intelligence we have following competitors:



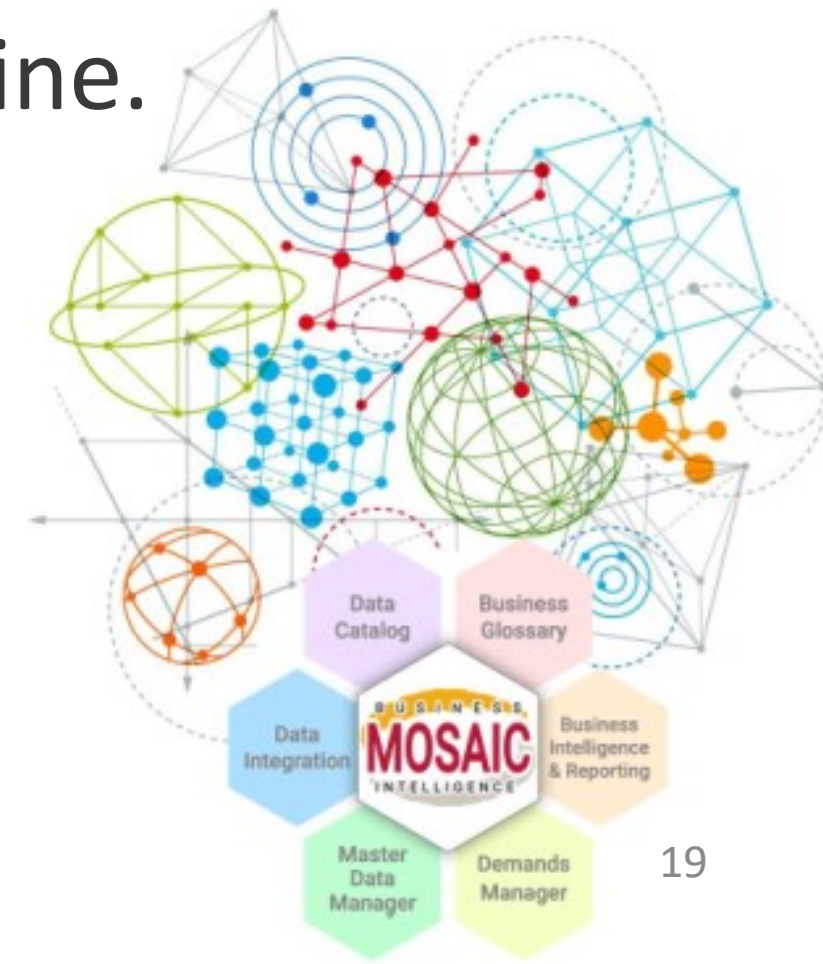


- A **single platform** contains a complete set of components **for working with data successfully**
- Works steadily **under heavy load on cheap hardware** because it is designed based on the principles of Mass Service Theory
- Creates a single virtual space of data and indicators, fills it with real data as requests from users are received, ensuring the **minimum cost of system ownership**
- **Unique concept** - "Chart by one click" allows unprepared users to get started right away
- Supports **visual data exploration** scripts and **data animations**
- Provides the **most fresh data** because it isn't required the source data to be preloaded into special data structures
- **Accesses data directly to IT systems**, minimally affecting their performance
- Supports an **autonomous data provisioning** including through REST APIs, with a unique mechanism for calculating parameters when working on a schedule
- Supports **execution of actions in business processes by scenarios** depending on the values of calculated indicators
- **Stores the results** of all executed data queries and reports, versions of reference data and algorithms by which the data was processed, helping pass audits.



The innovative approach to development of the MOSAIC platform is in the implementation of a unique type of system for working with data – a high-load quasi-OLAP using a two-stage model for creating a data slice: at the first stage, using a queuing system and managing the load on data sources, a preliminary cutting of the virtual cube consists of data from various data sources is performed based on user requests in order to generate a cube of a smaller dimension, which user can analyze himself at the second stage online.

The following results are achieved: interactivity with the possibility of processing large amounts of data with minimal impact on data sources and reducing the cost of working with data.



Maximum speed of providing up-to-date data



- Registration of a request regardless of the availability of the source IT system and automatic execution of the request when the data source becomes available.
- Prevent waiting for simple queries to execute due to complex resource-intensive queries execution .
- Detection of similar queries or queries similar by data and reuse of their results
- Simultaneous access to various data source with selection of the data sources least loaded at the moment without preloading data into data warehouse.
- Automatic requests re-execution in case of non-fatal failures with dynamic execution intervals changes.
- Request execution on condition
- Executing requests only when source data is up to date
- Executing requests on a schedule with changing queries parameters using templates or custom algorithms
- Starting request depending on the execution of another request.



- Delayed start system - queuing data requests taking into account the priority of requests and the complexity of algorithms balances the load of data source over time.
- Selecting a source for a request, taking into account its performance, current load, allocated resource quota, which varies depending on the time of day.
- Time load balancing based on time slots in data source allocated for MOSAIC.
- When constructing a report, users use metadata without accessing the real data source.
- The ability to analyze the once obtained data without re-accessing the data source
- Data caching
- Configuring the time of availability of each data source
- Setting the execution time limit for each type of query.

MOSAIC Platform functionality



- Web user interface
- Access rights management
- Reports Designer
- Data visualization & animation
- Dashboards
- Visual data analysis
- Master Data Manager
- Business Glossary
- Data Catalog
- Search data
- Data masking
- Deleting data for GDPR
- Telegram bot
- REST API
- Connecting to various data sources
- Manual and batch data entry, incl. from Excel
- Storing the results of data queries and reports
- Managing data requests queues
- Balancing load of data sources
- Forecasts, analyzing trends and events
- Control of data correctness and freshness
- Loading data into consumer databases
- Delivery of data and reports to consumers
- Informing users about data events
- Logging of all actions
- Word and Excel reports templates
- Full self-service support
- Support for teamwork



- MOSAIC is implemented in the **C++** programming language and provides full range of capabilities when being used either with **Oracle** or free open source **PostgreSQL** DBMS at the customer's choice.
- MOSAIC works on inexpensive **X86** servers or on **ARM 64** architecture.
- MOSAIC works under **Red Hat Enterprise Linux, Oracle Linux, Astra Linux, RED OS, ALT Linux, CentOS, Ubuntu.**
- MOSAIC collects data from **different databases** and various **file sources**, including **MS Excel** of a complex structure, and can load them into **Oracle, MS SQL, PostgreSQL, MySQL, MariaDB, Hadoop, GreenPlum.**
- Data query results and reports are stored in **Oracle, PostgreSQL** or **HBase.**
- There are **no special requirements for user's workplace**, only any modern Internet browser is required.
- For integration with IT systems, **SOAP** protocol is supported.
- Supports running in **Docker containers**

Reporting capabilities

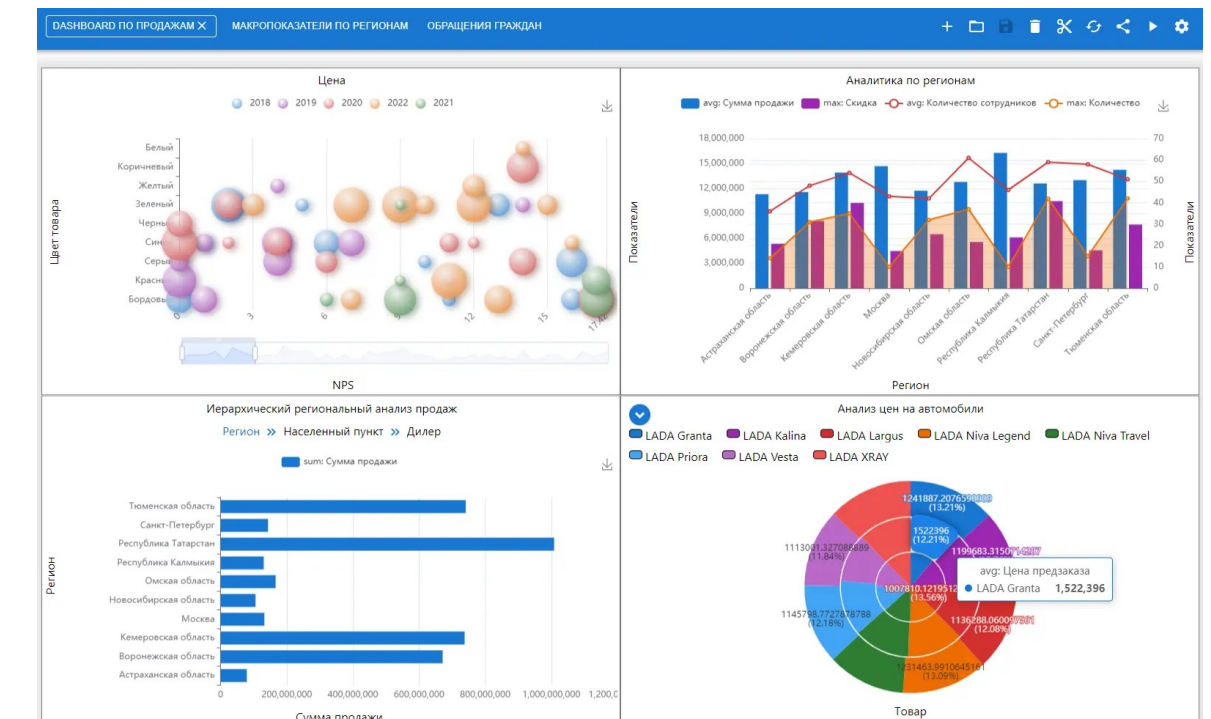


- Input parameters for reports can be manual input values, reference data, text or MS Excel files with a user-configurable complex structure, path and file masks
- The design and structure of reports is user-configurable in powerful editor
- Report template description language is supported
- Extensive set of functions for calculating users' own metrics
- Publishing customized design and report structure for mass use
- Reports are generated in various formats: Excel, PDF, HTML, Word, CSV, XML
- Pixel perfect reports are generated based on a template in MS Word or Excel
- The ability to delegate access rights to the reports to your colleagues
- Providing reports or datasets via Web and mobile interface, Email, file folders, ftp, url links to http/https resources, Uploading to user databases, Telegram
- Embedding external content in a report and embedding reps to external systems
- Execution of reports on a schedule with an intelligent system for updating input parameters for organizing an autonomous reporting process





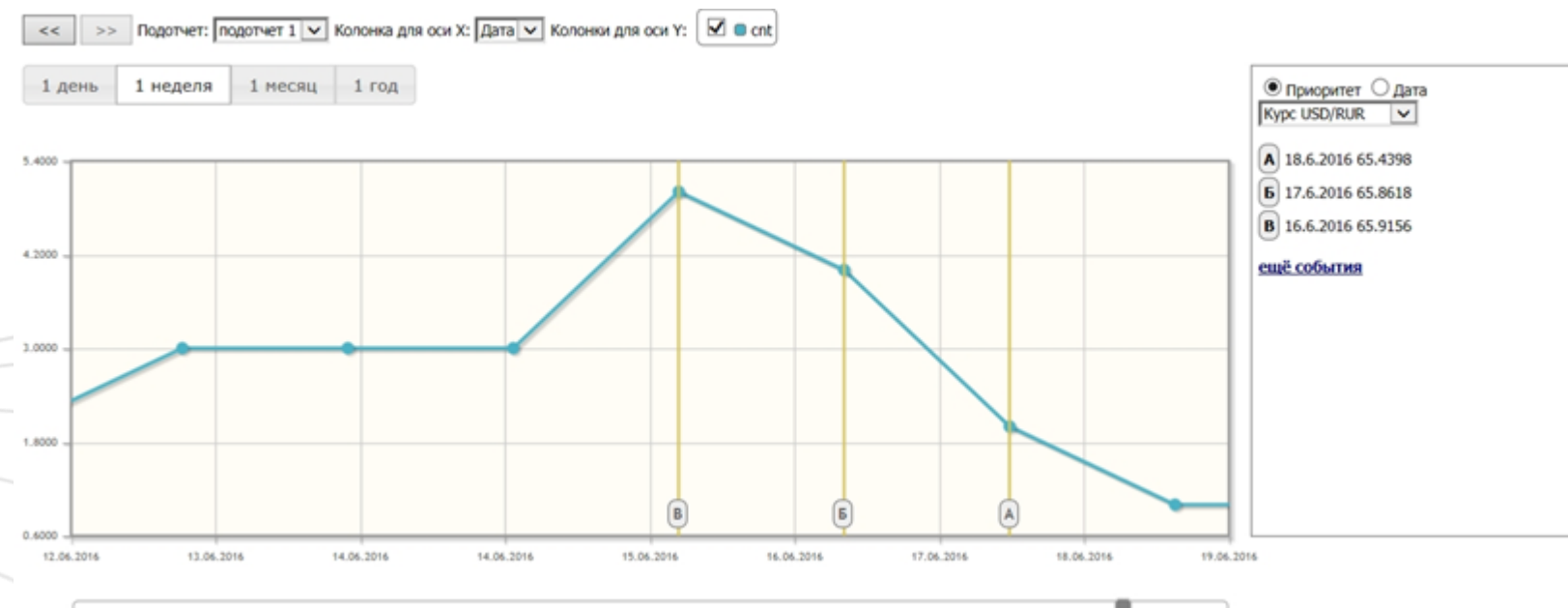
- Creation of dashboards of any complexity by mouse in web-interface by users without programming
- Full self-service in data visualization
- Unique concept - "Chart by one click"
- Visual Data Analysis
- Visualization of geodata
- Multilanguage
- Information boards for real-time visualization of changing data
- User customization of multi-level hierarchies of indicators for drilldown
- Customize captioning of indicator values in the form of pictures to simplify data perception
- Ability to embed dashboards on external sites
- Teamwork with dashboards



- Building trends using various algorithms (including periodic changes)
- Calculation of the predicted values
- Assessment of the deviation of the obtained value of the indicator from the forecast
- Cross-validation of indicators
- Graphical and tabular display of indicator changes
- Notification of the receipt of "suspicious" values via the web interface or Email, incl. by hierarchical, dynamic notification lists generated depending on the deviation value



Various events are constantly happening around us: new tariffs are launched, the USD exchange rate is changing, new shops are opening etc. Many of these events directly or indirectly affect the indicators that we receive in our reports, for example, an outage in a provider's network can affect a revenue for certain services, the launch of a new tariff can affect the consumption of old products. In MOSAIC, you can search for the relationship between events that have occurred and changes in indicators in reports and see how certain events affected the values of indicators, or vice versa, which events could cause changes in indicators in reports.



- Role-based data access
- Customizable destruction of personal data
- Support for work on secure protocols https, ftps, sftp, S/MIME
- Logging of all actions in the system, including viewing data
- Automatic blocking of access by inactivity
- Provide data protection by dynamically masking data in reports



- MOSAIC implements flexibly configurable dynamic data masking depending on user access.
- If a user doesn't have access to any data, the values are replaced for example with "*****".



Файл	Эфф.дата	Provider ID	DAMPS Provider ID	Пров.	GSM	Код страны
ТАРЗВ	10/04/2018 00:00:00	*****	ГЛОНАСС, Россия	RUSGU	N	7
ТАРЗВ	15/07/2011 00:00:00	*****	ТТ Mobile, Таджикистан	TJKTT	F	992
ТАРЗВ	01/06/2018 00:00:00	*****	Zain, Нигерия	NGAET	F	234
ТАРЗВ	07/11/2008 00:00:00	*****	Билайн - Иркутск	RUSLA	H	7
ТАРЗВ	15/07/2011 00:00:00	*****	HUTCH Gujarat, Индия	INDF1	F	91
ТАРЗВ	15/07/2011 00:00:00	*****	Vodafone, Индия	INDE1	F	91
ТАРЗВ	15/07/2011 00:00:00	*****	HECL Maharashtra & Goa, Индия	INDBM	F	91
ТАРЗВ	15/07/2011 00:00:00	*****	HUTCH Kolkata, Индия	INDCC	F	91
ТАРЗВ	15/07/2011 00:00:00	*****	HECL Kerala, Индия	INDPK	F	91



- Terms in the report can be links to a glossary
- Two-phase adaptive search system
- Terms and definitions are entered by users
- Customizable terms approval schema
- Versioning of terms
- Linking terms to topics and business processes
- Synonym-antonym, generalization-clarification, whole-part ...
- Own and inherited properties of terms
- Term attributes - any content
- Logging
- Access rights management



Airplane cabin dialogue

Pilot: Indicators?
Navigator: Fifty!
Pilot: What is fifty?
Navigator: And what is indicators?

The use of a single glossary by all employees is an important part of the manageability of an organization



Recently, the amount and variety of data available has become overwhelming. The task of finding suitable data is not very trivial. For many employees, especially beginners, finding the data they need often turns into a real quest. The MOSAIC data catalog helps to solve the problem of collecting information about data, classifying them and describing them for easy search and use.

- Automatic metadata collection and model building
- Manual metadata enrichment
- Metadata Import/export
- Various data checks settings (freshness, quality)
- Data relationships - Identity, Master - Slave
- Metadata attributes - any content
- Customizable metadata approval schema
- Search metadata
- REST API



Master Data Manager (MDM)



- MOSAIC has a built-in system for Master Data management
- Supports both custom reference data which can be maintained manually and technology directories that are not displayed in the catalog
- Access rights management to reference data is supported
- Access is implemented based on a flexibly customizable role model
- Convenient and simple interface (reference data catalog, search by content, filtering, pagination, manual input, import, export, add, overwrite etc.)
- Supports segmentation of reference data contents
- Supports input data controls setup for each reference data
- All actions are logged, the change log is available to users
- Reference data is independent entity and can be used outside the MOSAIC
- SOAP interface is provided for working with reference data from external systems
- The versions of reference data used for each data query are saved in MOSAIC



- Using connections to data sources, MOSAIC can **collect** the required data from various sources, **cleanse**, **combine**, **transform** them according to user-specified algorithms, and **load** them into external databases.
- Various types of target databases are supported
- In the ETL configuration are supported: the selection of the dataset or part of the report required for unloading, the configuration of the structure of the unloaded data, the type of unloading: incremental or overwrite, automatically created or user-defined tables in the data receiver, data enrichment with service information about unloading, optional unloading of data query parameters, etc.
- Combining data loading capabilities with standard functionality such as scheduled execution with intelligent parameter updates, logging, and automatic error handling, MOSAIC provides an **ETL tool**, for example, for creating data warehouses.



Manual data input is used to collect data from branches / departments that are not integrated into the standard processes of the Company or to enter indicators that cannot be automatically calculated for various reasons.

System functionality:

- Manual and batch data input; batch input from CSV and MS Excel files with flexible configuration of data structure
- Calculation of values of loaded indicators by calling a configurable SQL queries
- Automatic control of input data
- Search data; Editing data
- Confirmation and cancellation of data input
- Access rights management
- Logging all actions
- Internal reporting





- Each MOSAIC user can create their own datasets using predesigned data acquisition algorithms by the developer. Self-creation includes definition of various input parameters, processing the received data, creating your own calculated indicators using complex formulas and a large set of built-in functions, customizing the report design using a large number of different options, determining the type of external databases - recipients data and report format, settings for various data checks and non-trivial data retrieval schedules.
- **Full self-service** means that the user can create his own algorithms for receiving, combining and processing data from any sources connected to MOSAIC. The user can write his own SQL queries and automatically get the opportunity to use all the services provided by the MOSAIC for the results, such as managing the load on data sources, formatting results, intelligent schedules, data validation, storing results, delivering results to consumers, integration with external recipients data, publication of results, alerts, link to business glossary, etc.



- For interaction with external systems, the MOSAIC platform supports the SOAP interface.
- Through the API, it is possible to perform a wide range of interactions with MOSAIC from ordering a report to obtaining a result, from working with reference data to uploading data, from setting up scripts for receiving data on a schedule to delegating rights to view data to colleagues.
- For the convenience of users, a regular mechanism for obtaining a wsdl template configured for a specific task based on actions in the web interface is provided..





- Technical support for the MOSAIC platform is provided in Russian and **English**. Other languages are available upon request.
- Technical support is provided using a convenient proprietary **demands management system**.
- Various service plans are available for technical support - from basic to priority with reduced response time and **24x7 operation**.





Thank you!

www.mosaic-bi.com

info@realtimesys.com

+7 (903) 100-4444

+7 (903) 561-5555